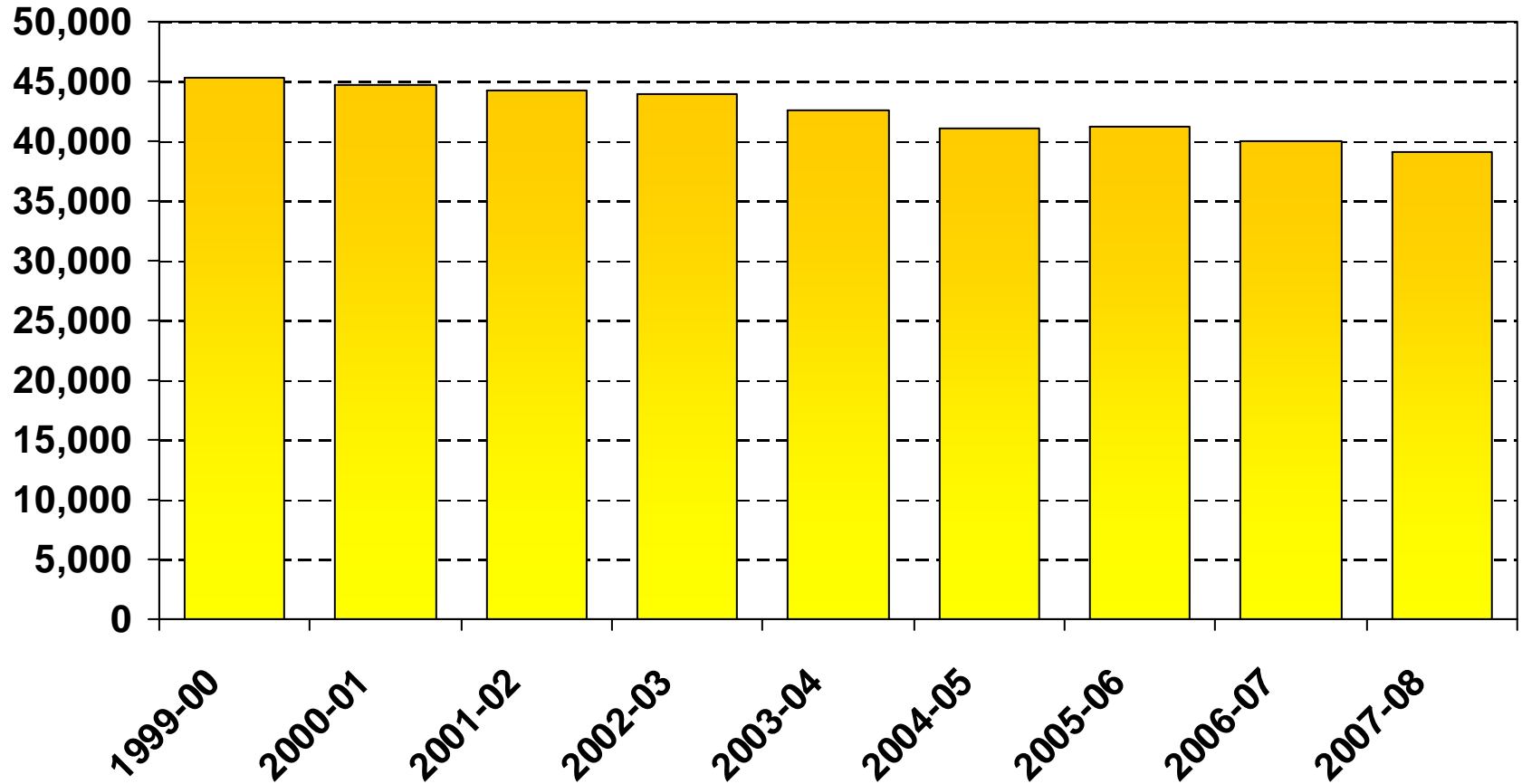


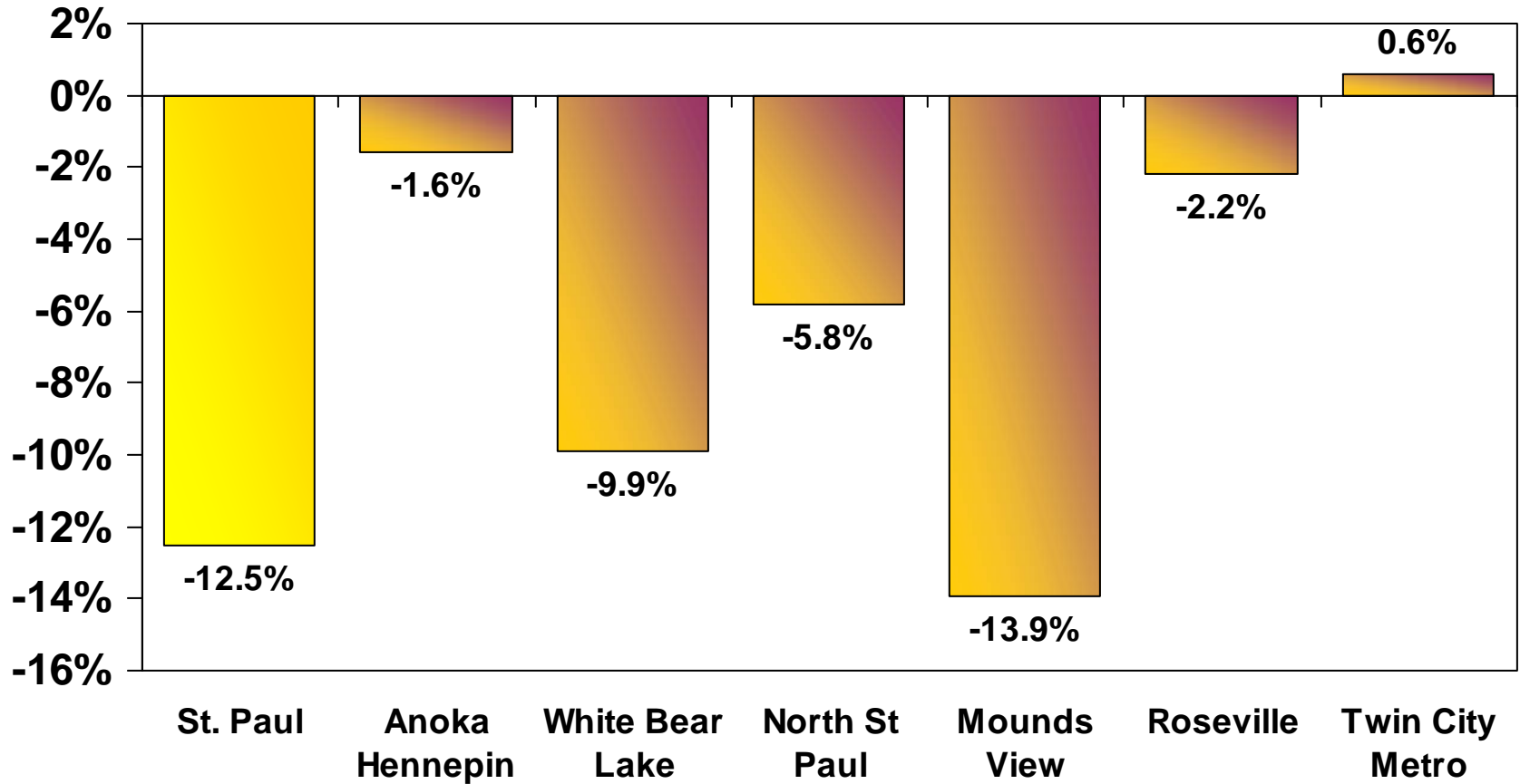
# Changing Enrollment In St. Paul Schools

Tom Gillaspy, State Demographer  
Mn Dept of Administration  
February 2009

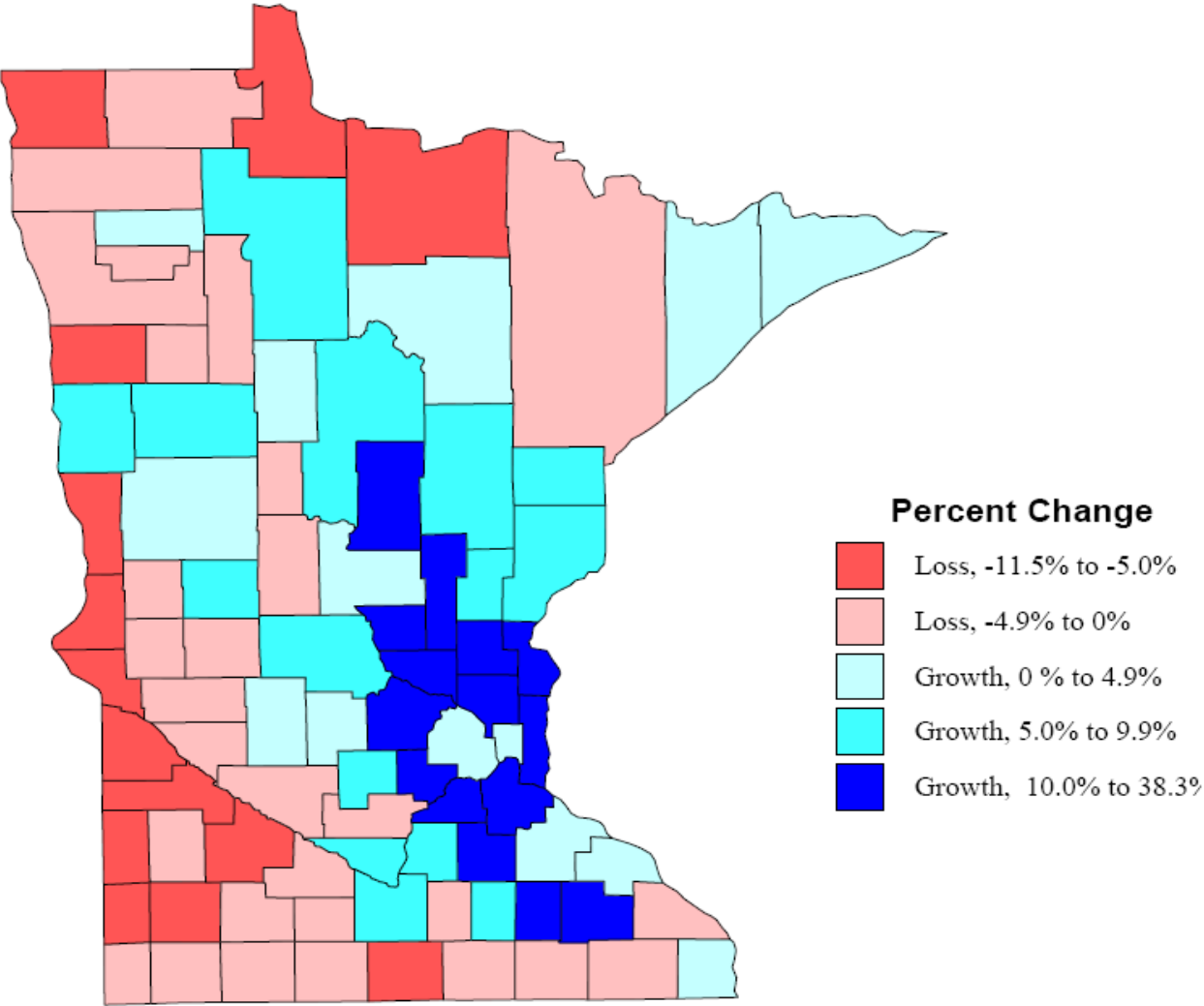
# St. Paul School Enrollments Are Declining 1.6% Per Year



# Change In Enrollment 2000-01 to 2007-08

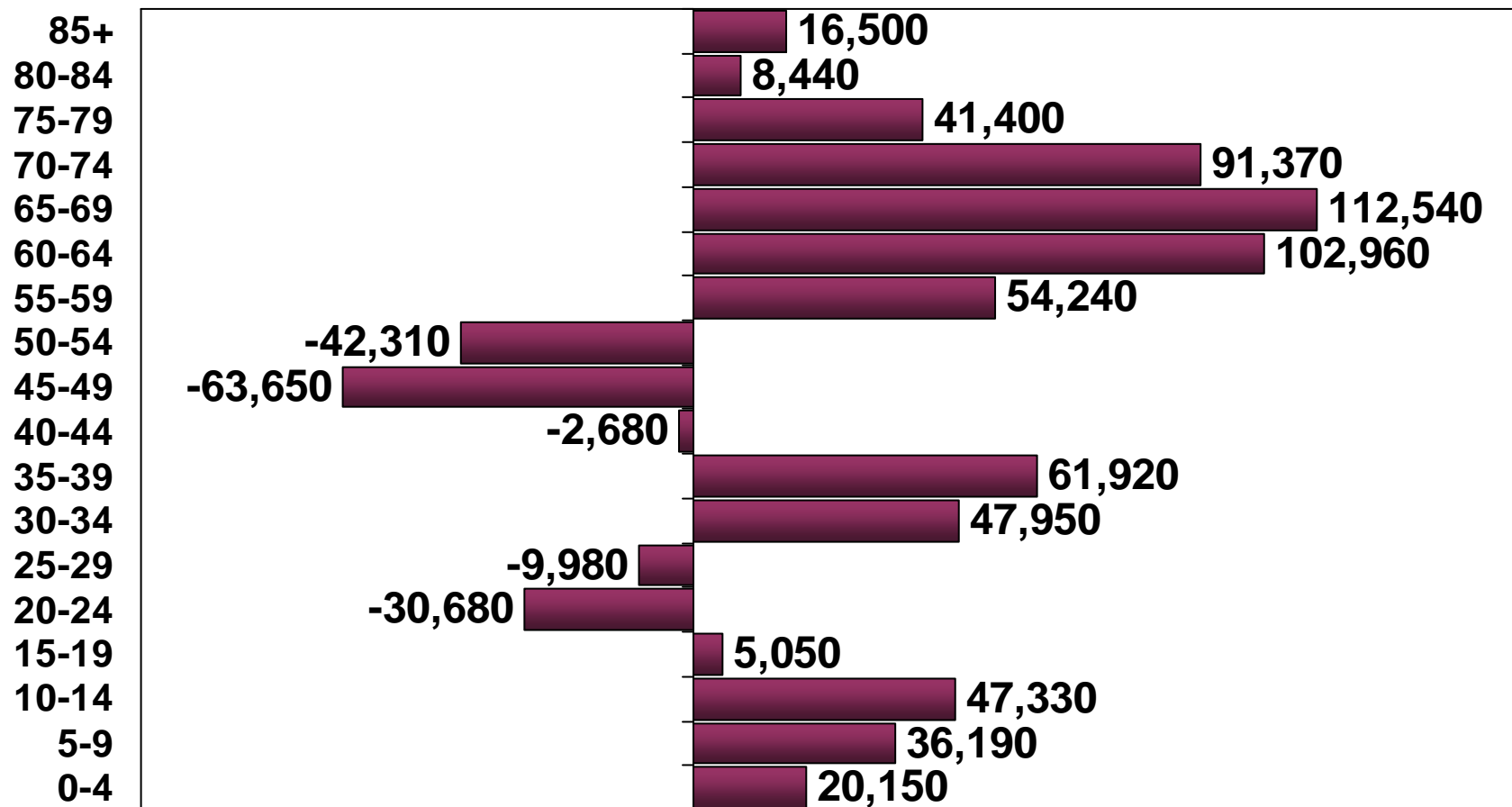


# Percent Population Change 2000-2007





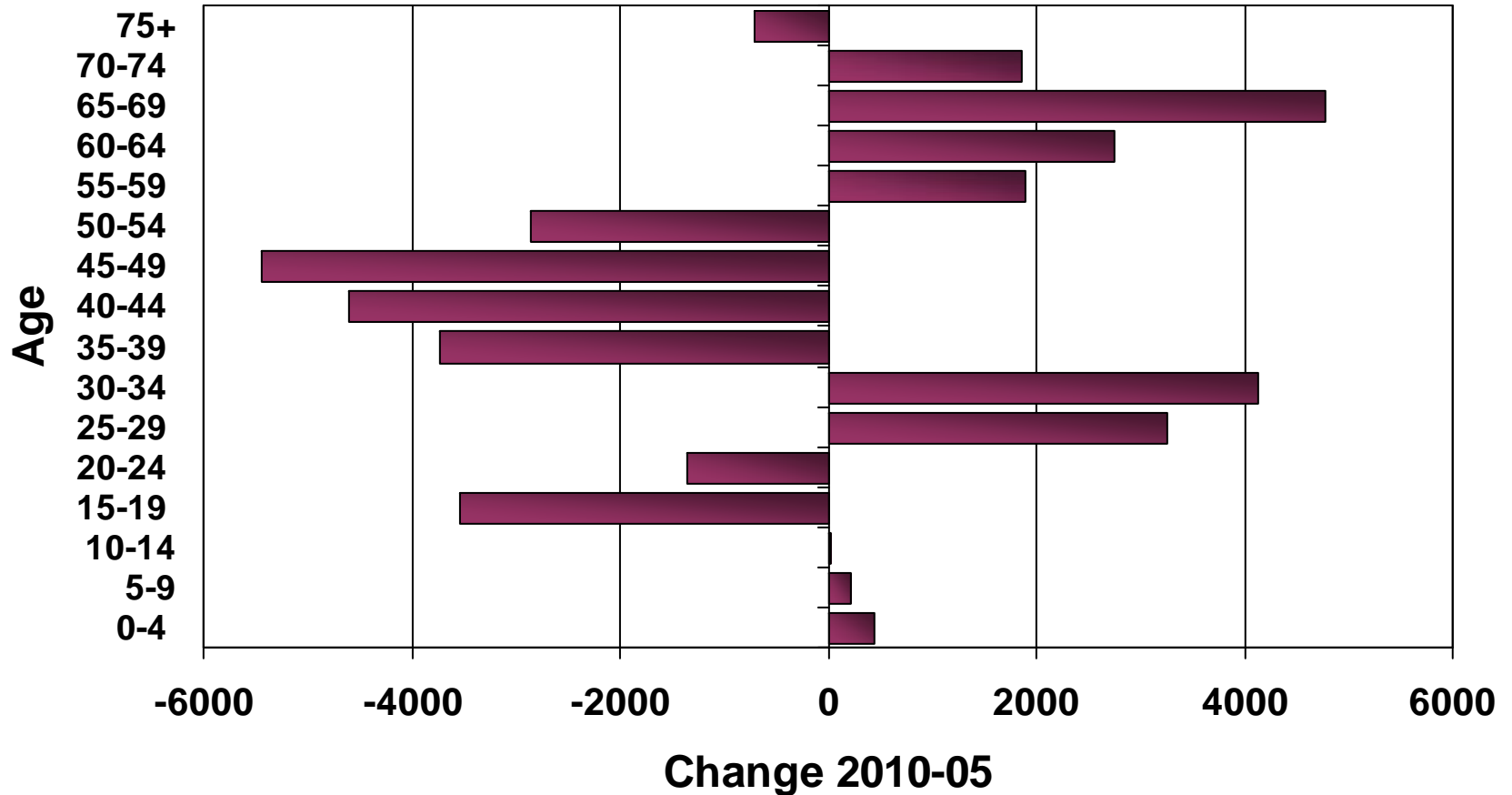
# From 2010 to 2020, Minnesota Will See Large Increases Age 50s and 60s



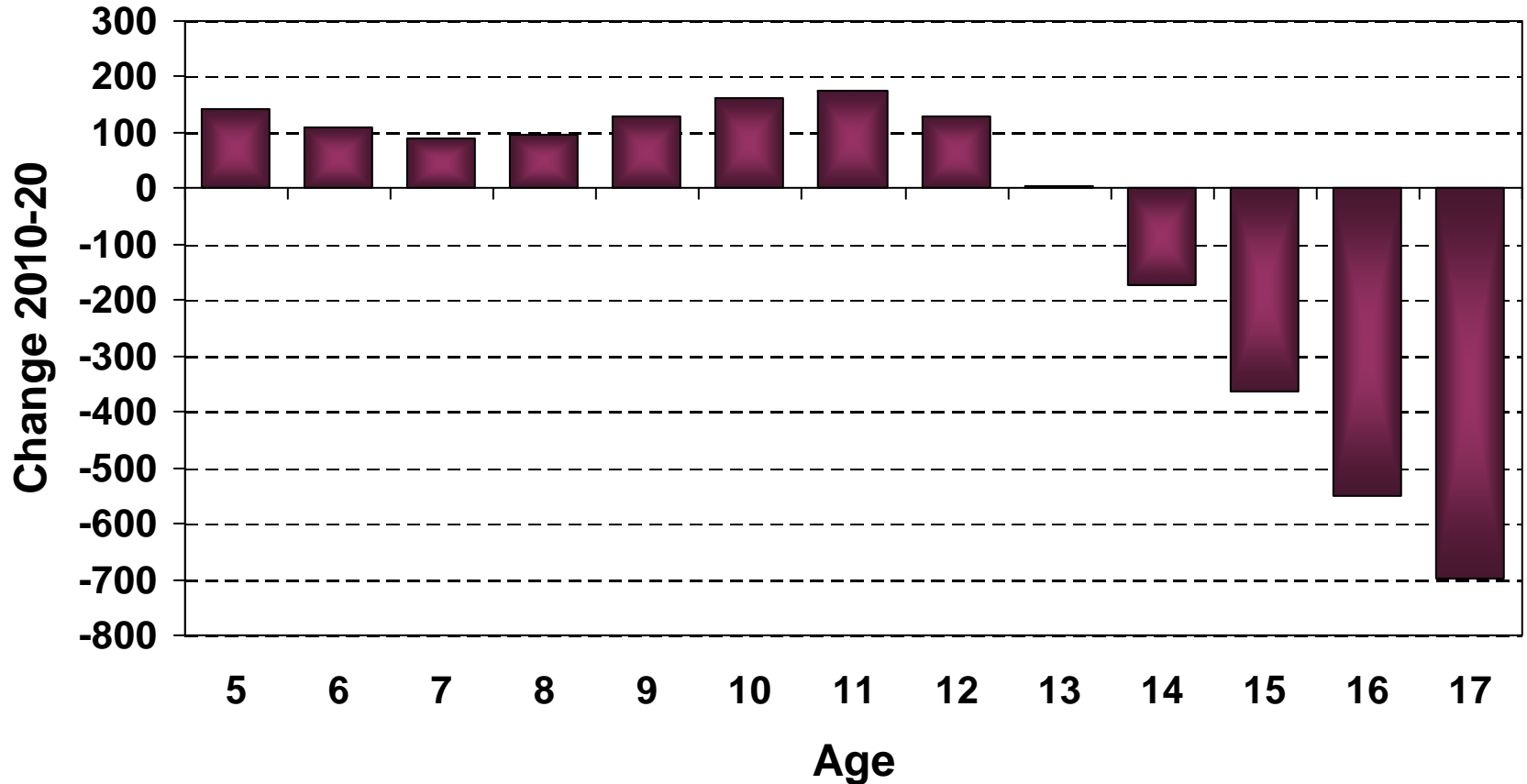
Source: Minnesota State Demographic Center

Numbers are rounded

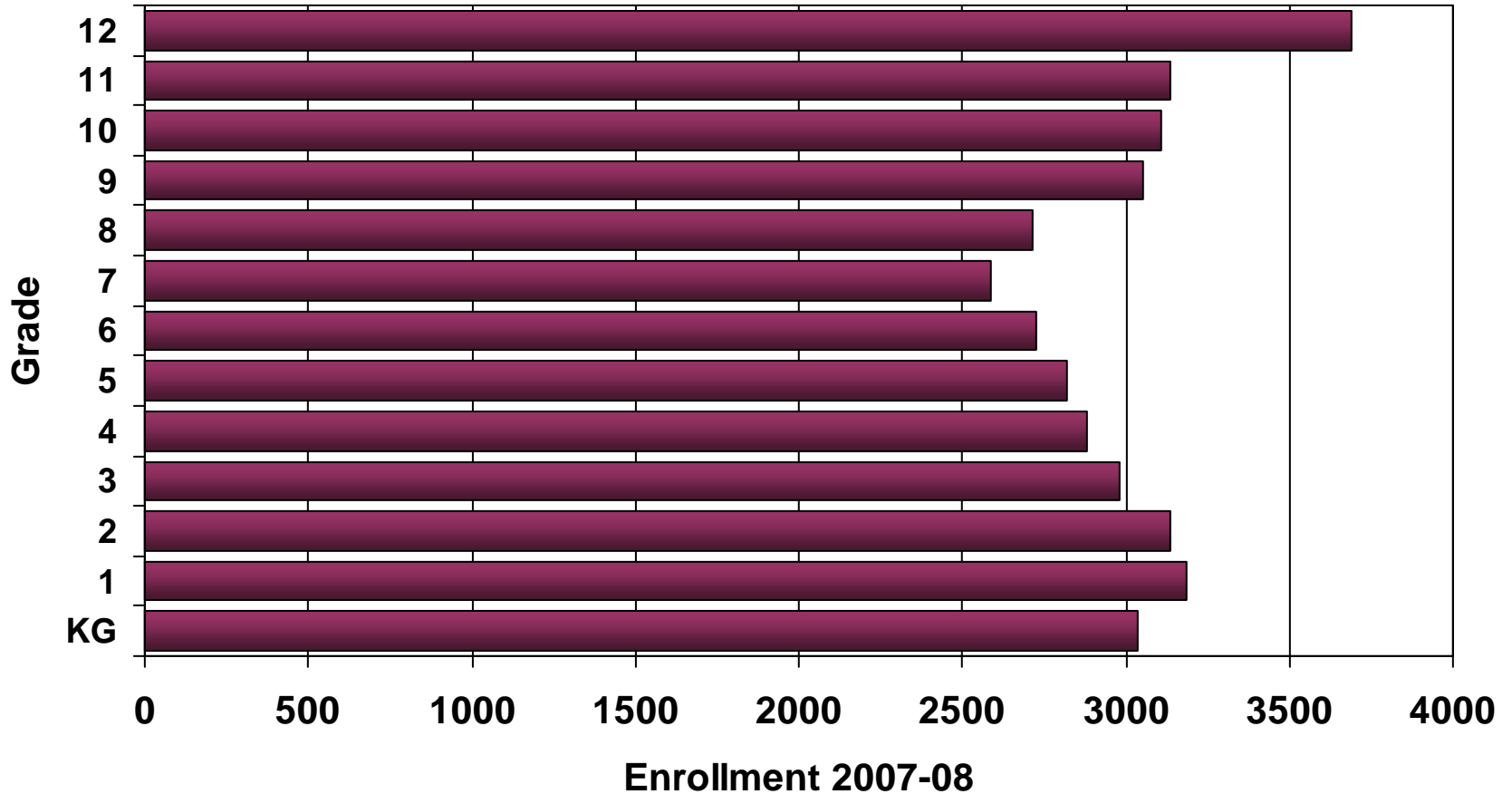
# Young Adults/Retirement Seniors Will See Biggest Growth In Ramsey County



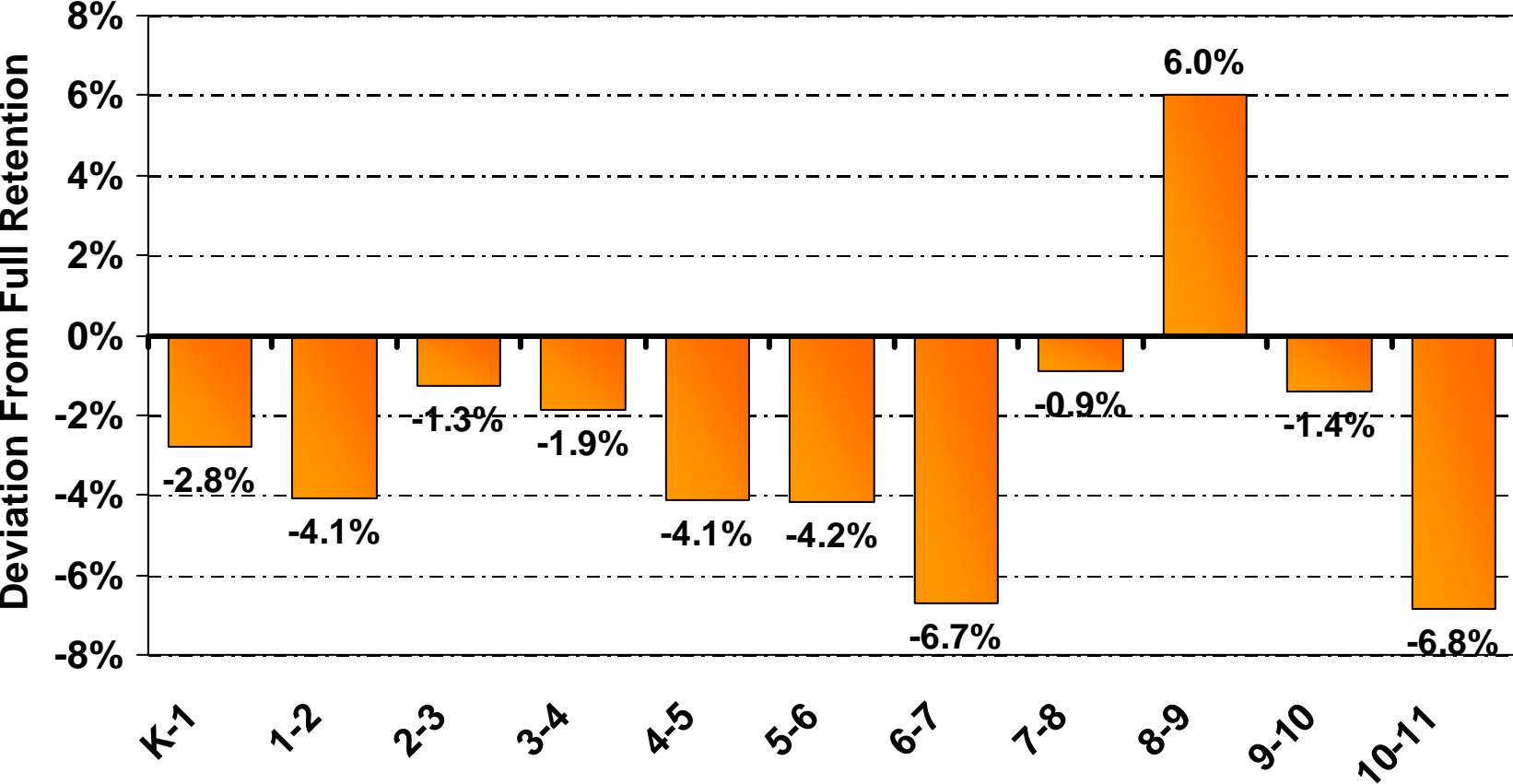
# Change In Ramsey County School Age Population Will Be Less Than 1% Loss Next Decade



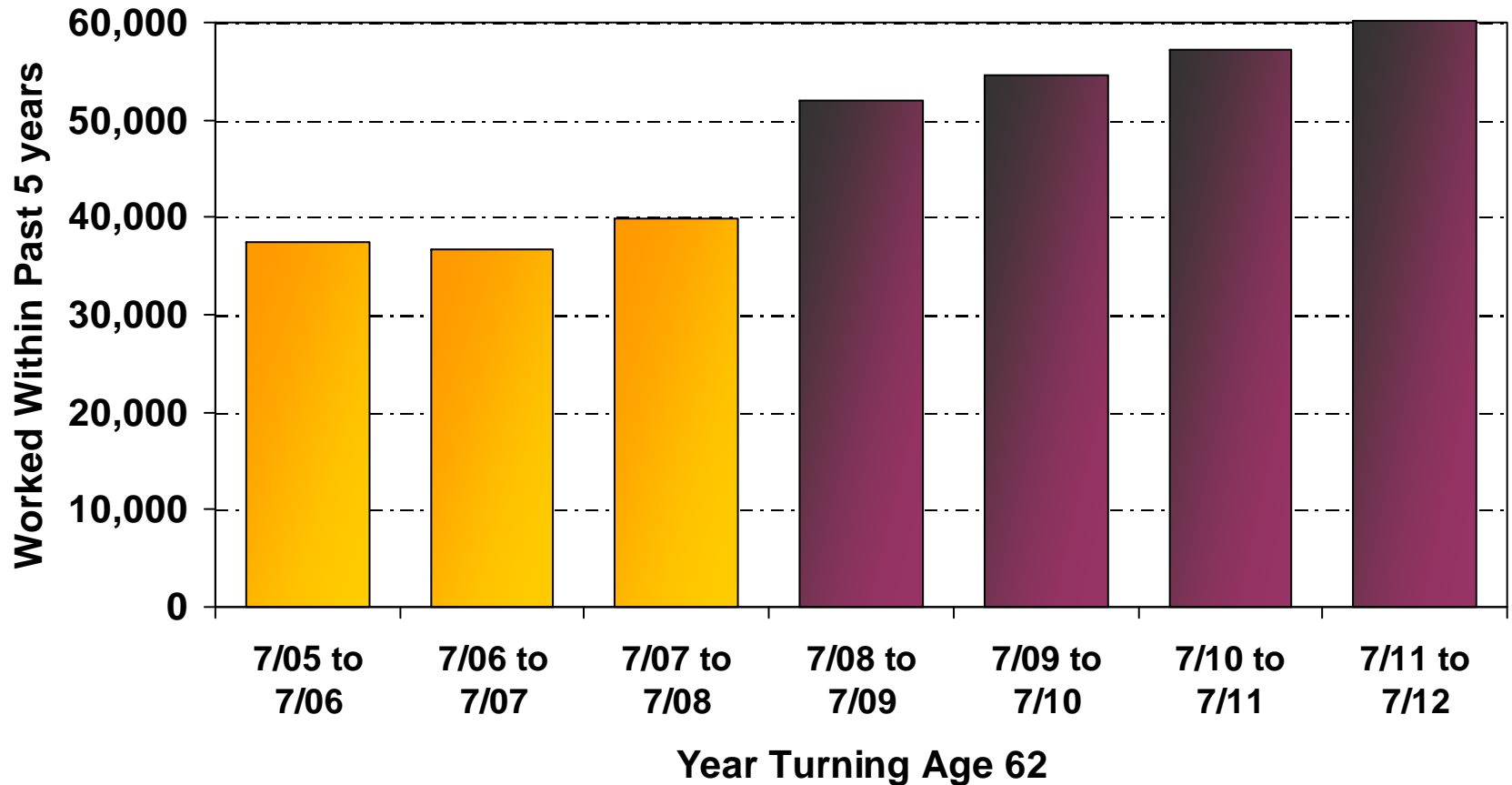
# Grades 9-12 Are Larger Than Grades 5-8 In St. Paul Schools



# St. Paul Grade Progression 2006-07 to 2007-08

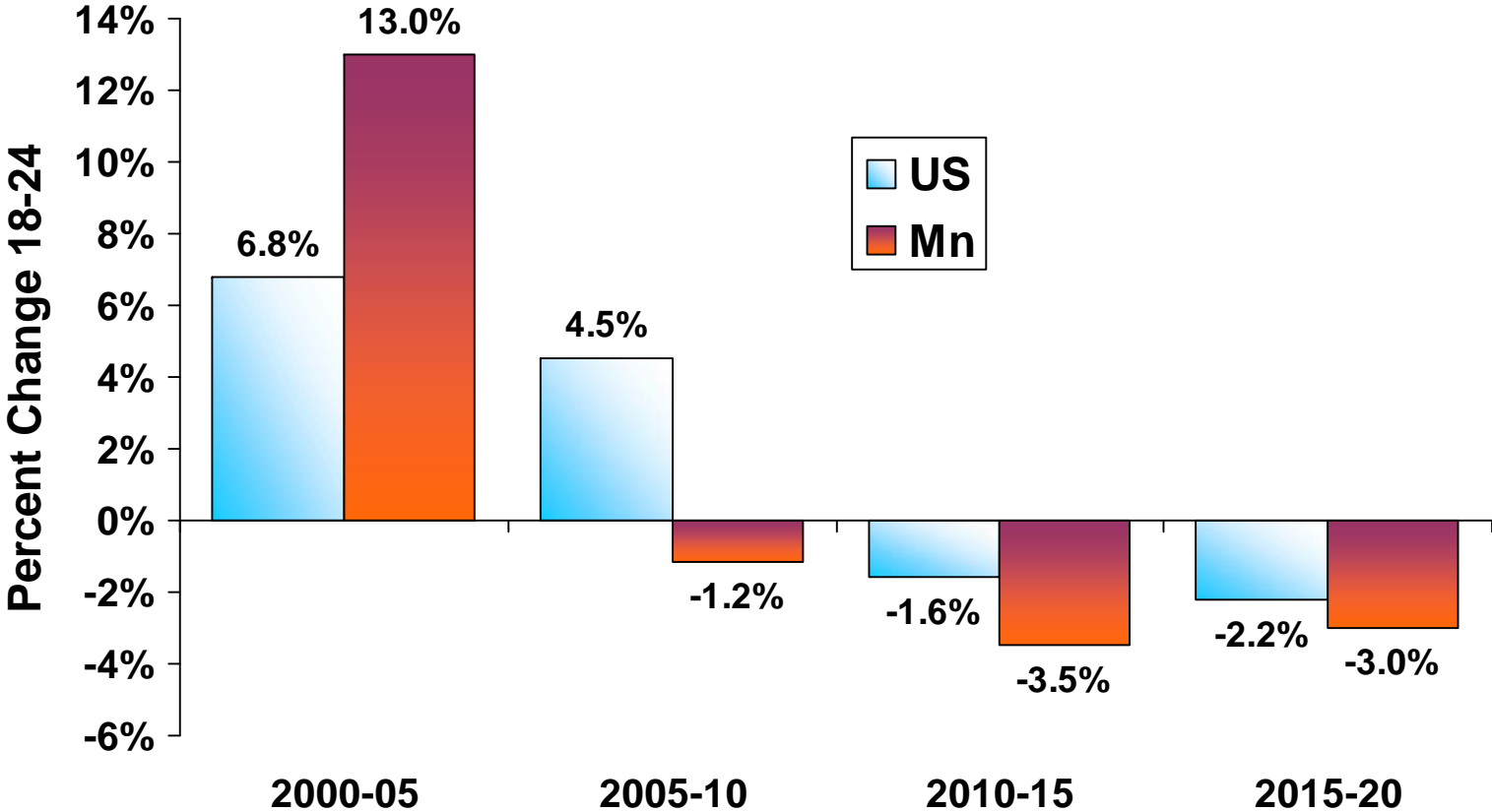


# Minnesota Will See a 30 Percent Jump in Workers Turning Age 62 Beginning 2008



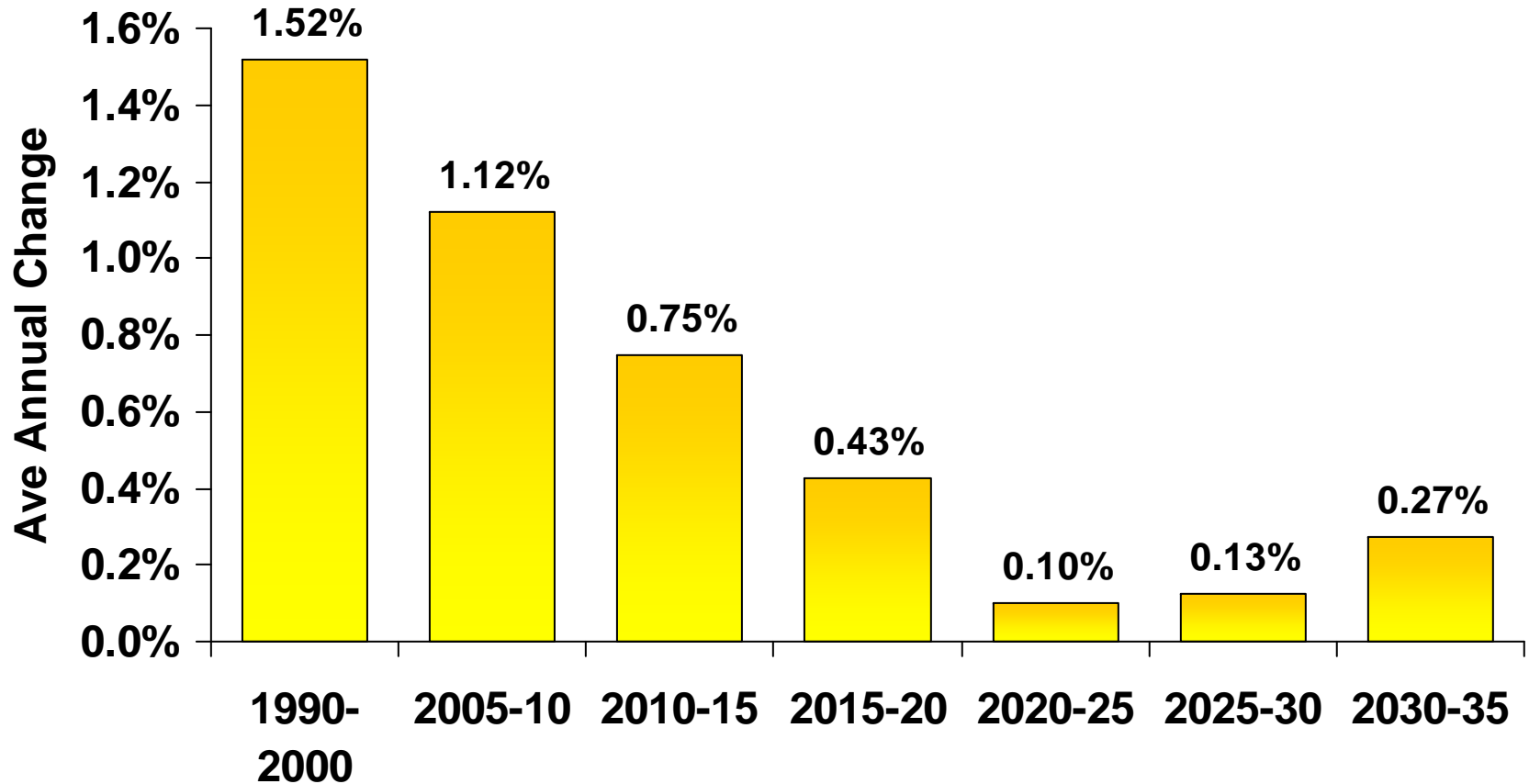
2005 ACS

# Competition For Future College Students Will Increase

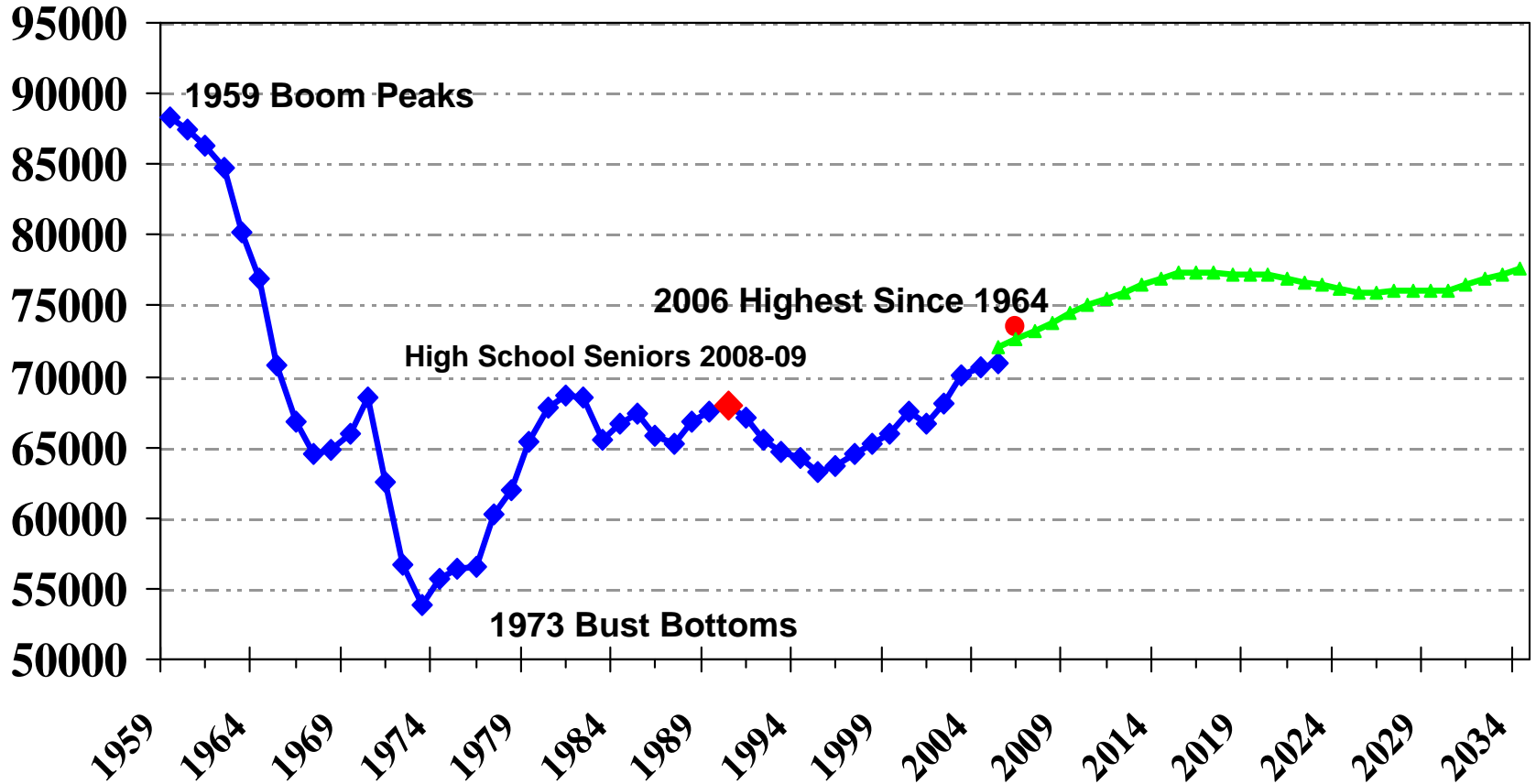


Census Bureau US Proj, Mn State Demographer revised 2007. The 18 year old population, both Minnesota & nationally are projected to decline starting 2009.

# Labor Force Growth Is About To Slow Sharply

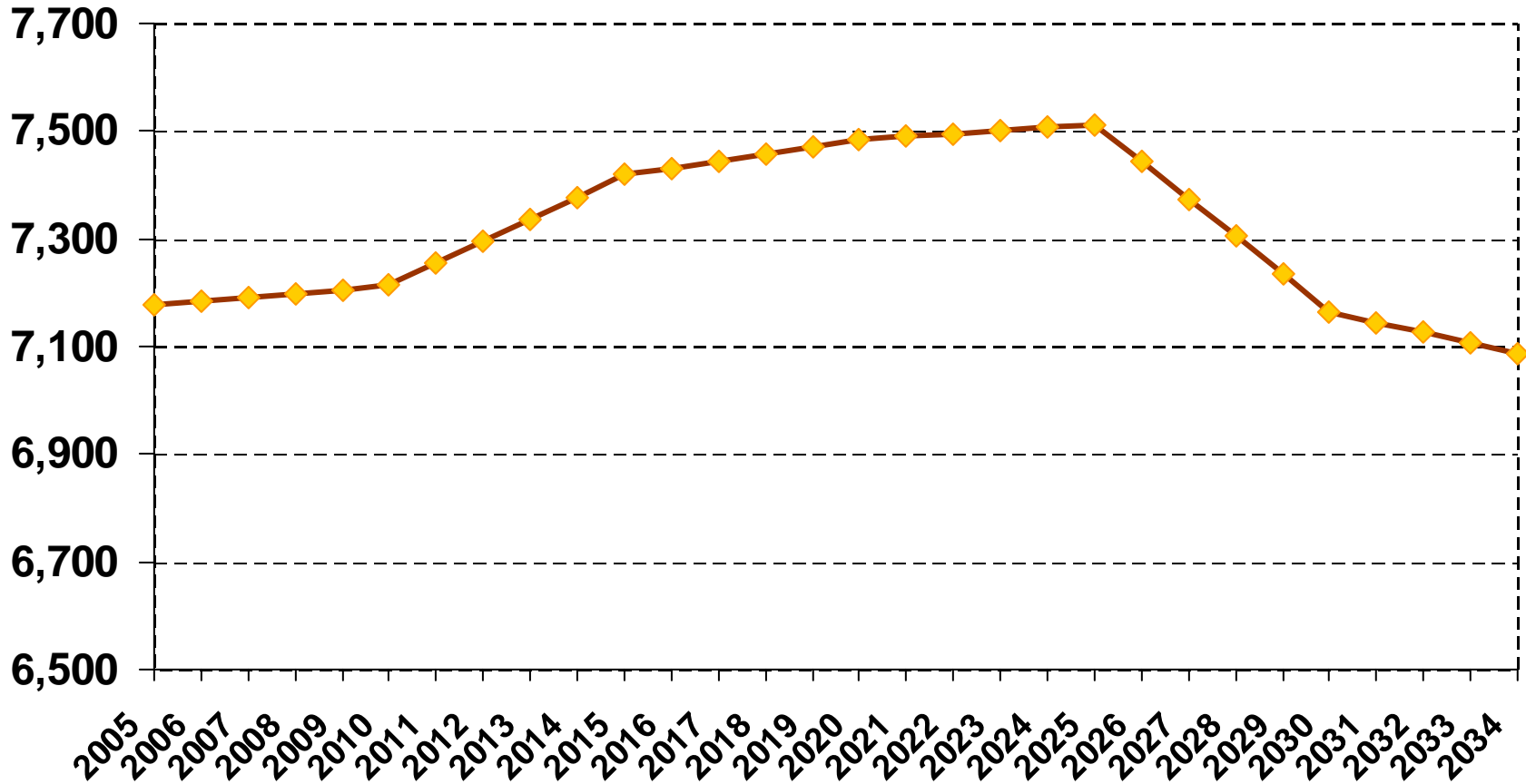


# Minnesota Births 1959 to 2035

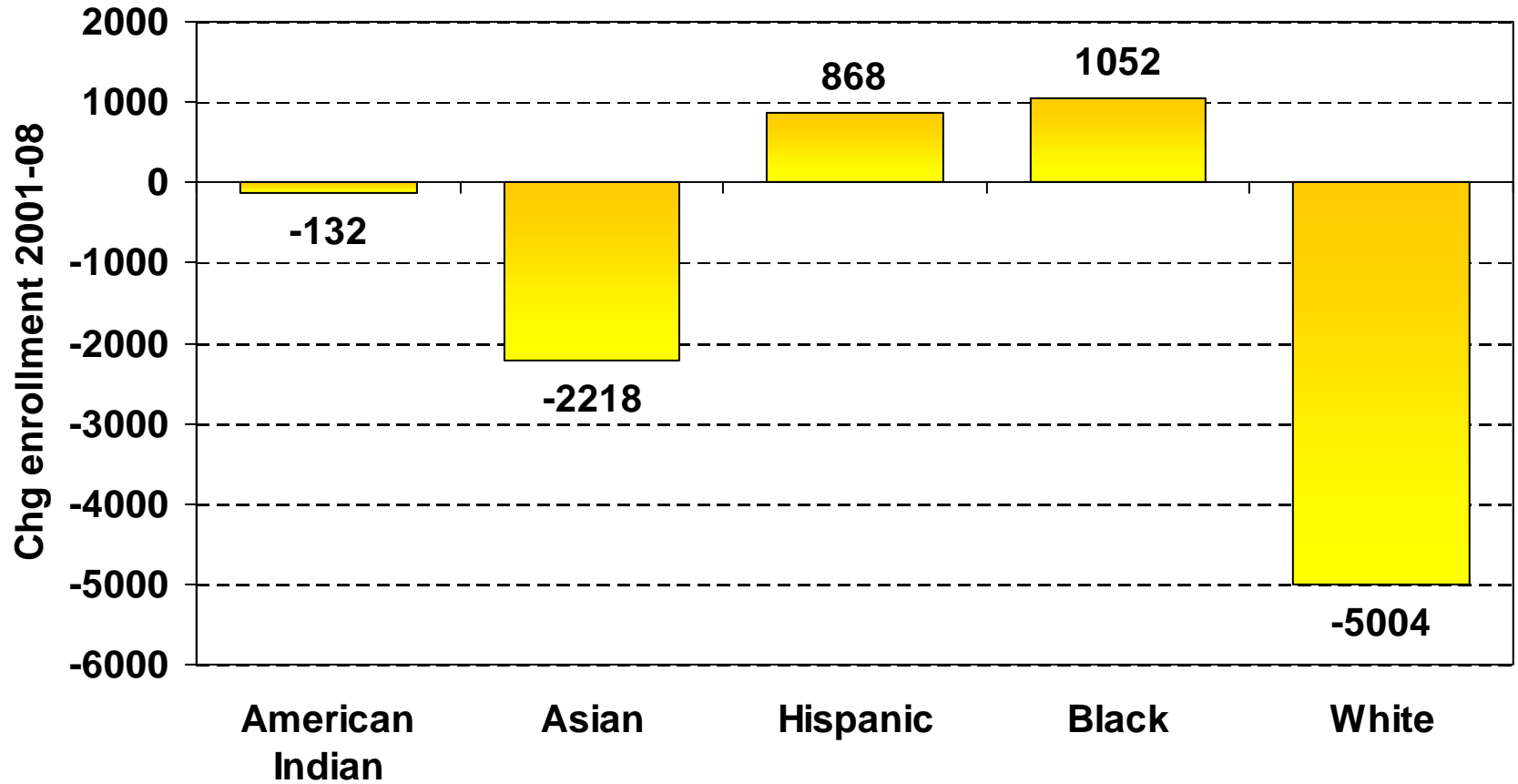


Source: Mn Dept of Health

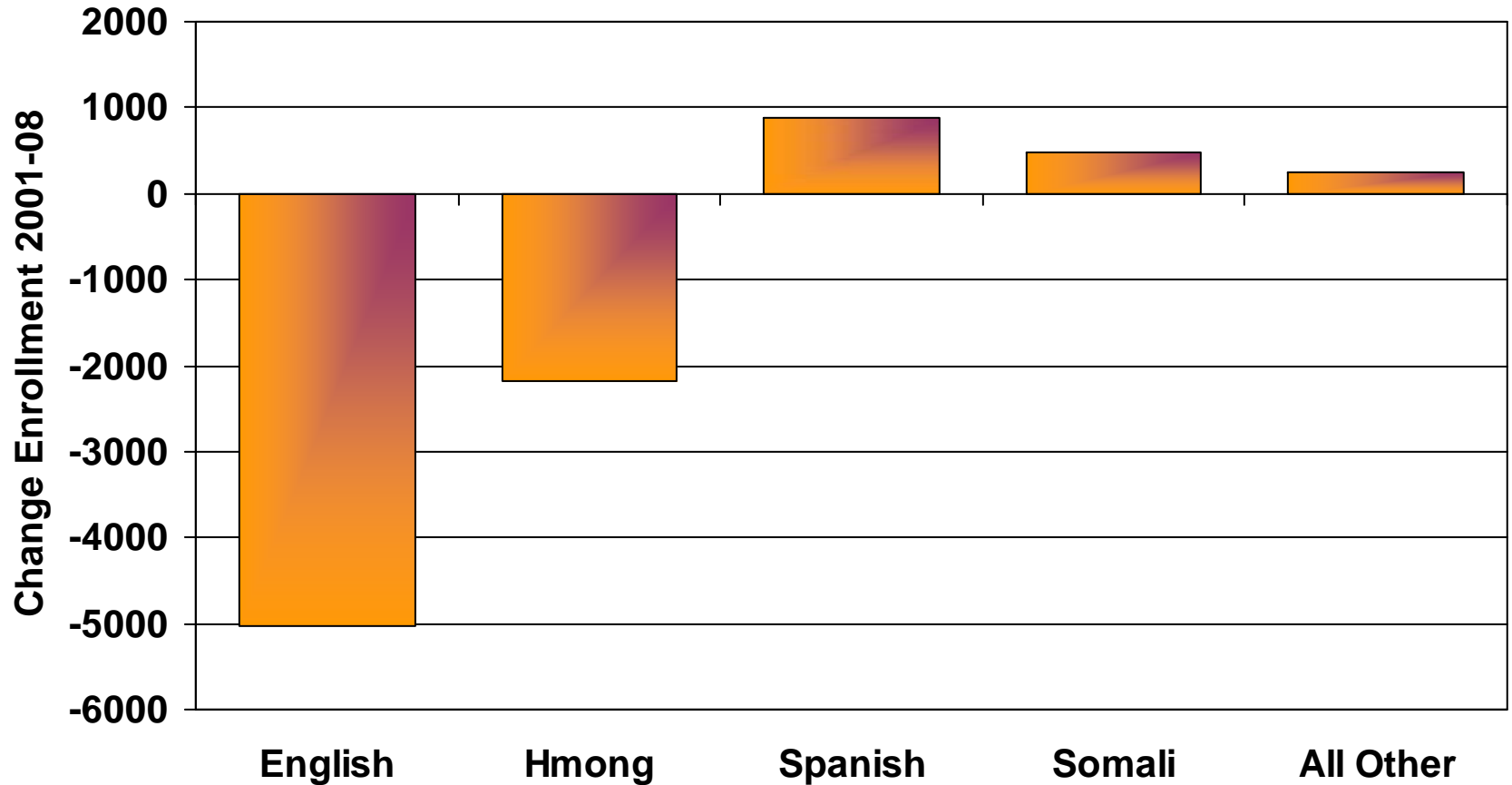
# Births In Ramsey County Will Increase After 2010, Peaking In 2025



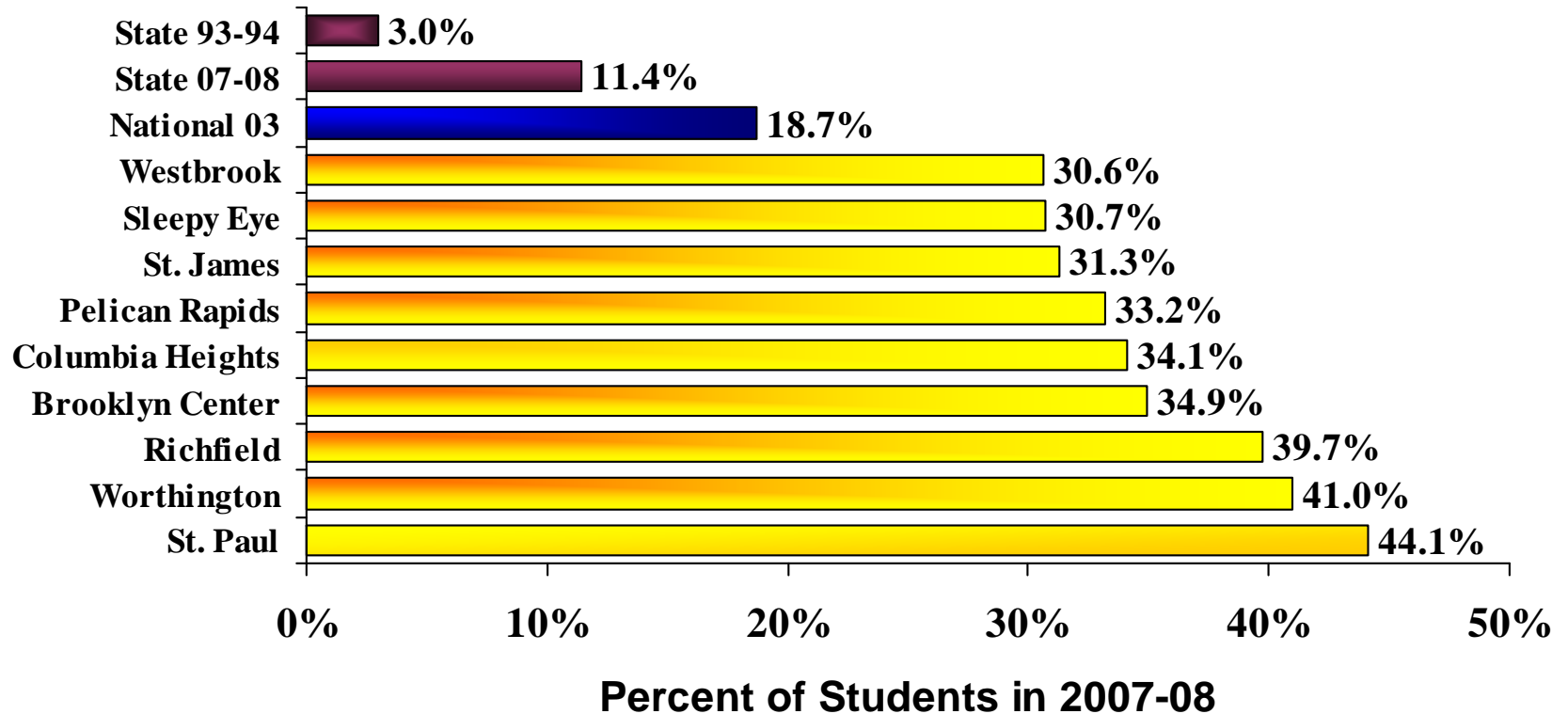
# St. Paul Schools Enrollment By Race/Ethnicity



# Language Spoken At Home Changed Little This Decade In St. Paul Schools



# Students Speaking Non-English Language At Home



Source: Mn Dept of Education data, Districts of more than 500 enrollment. Roseville students speak 53 different non-English languages, the most common of which are Hmong, Spanish, Burmese, and Chinese

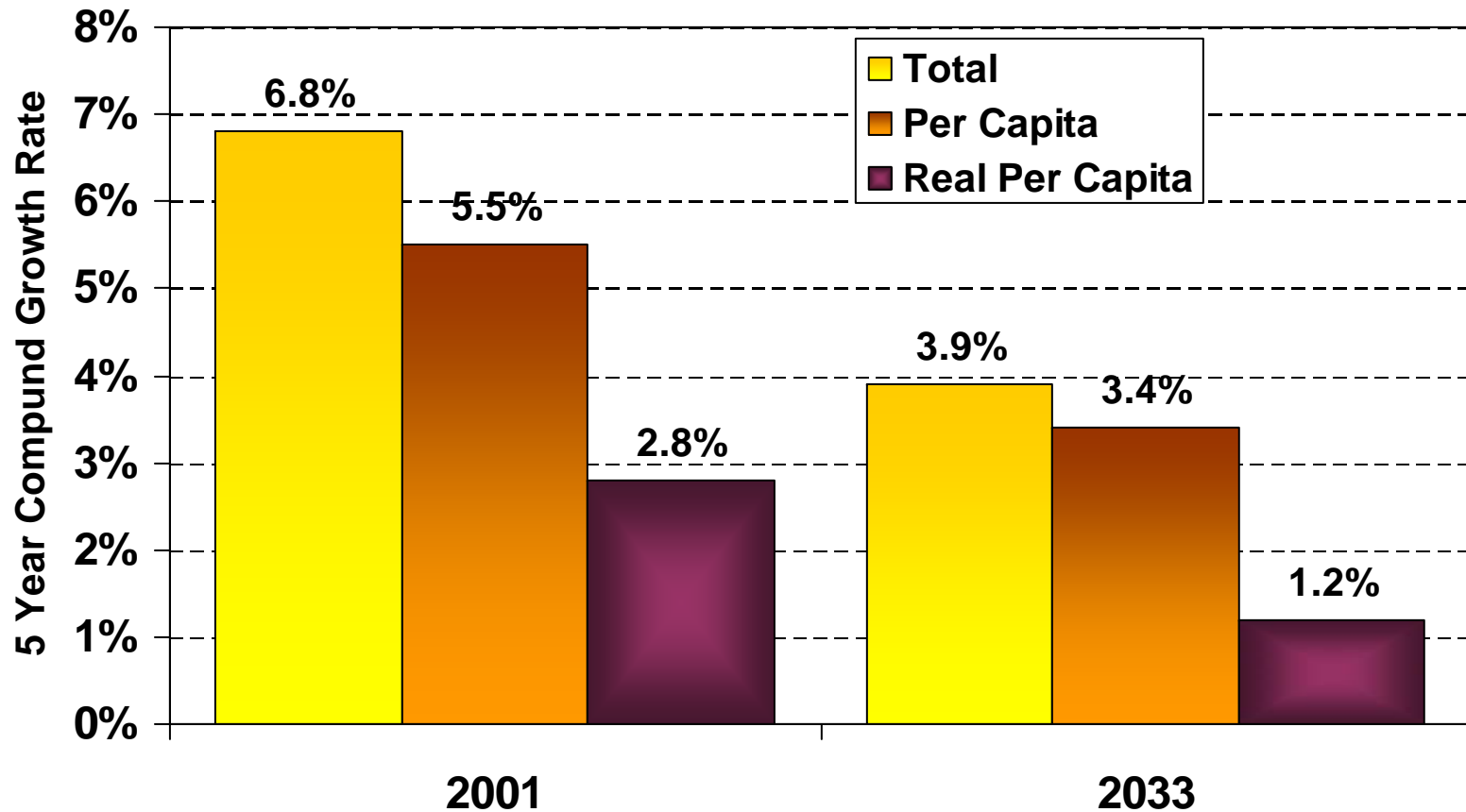
# The Next Generation Economy--

*Long term issues are quickly becoming  
short term challenges*

**The next four years will be a period of  
great social and economic change**

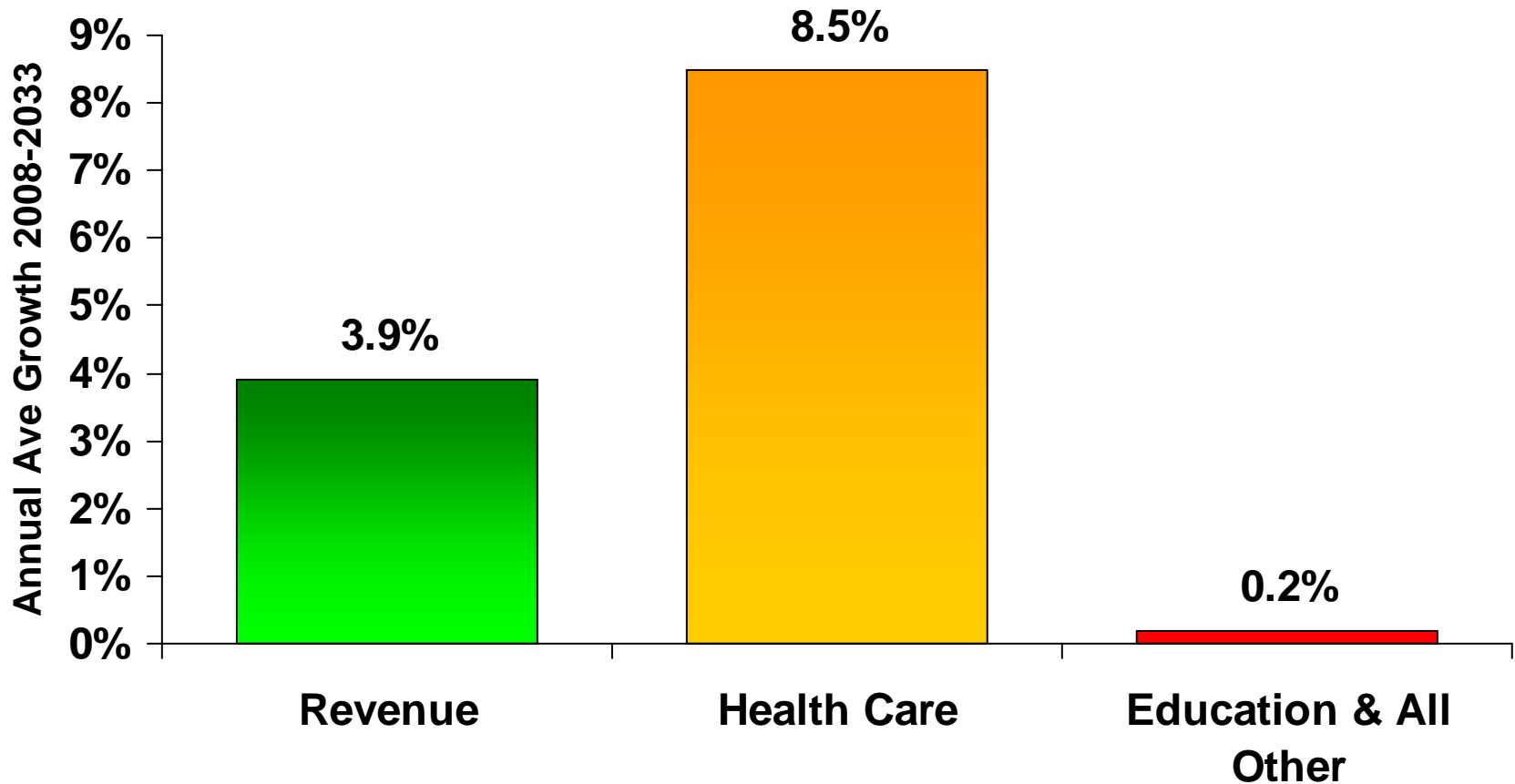
- ✘ Structural imbalances have turned into projected budget deficits**
- ✘ Rapid aging and the related surge in entitlements are upon us**
- ✘ Economic growth will depend increasingly on productivity growth**
- *Once again, wise decisions are needed***

# Next 25 Years--State Revenue Growth Rate Projected To Slow



Budget Trends Commission, 2009

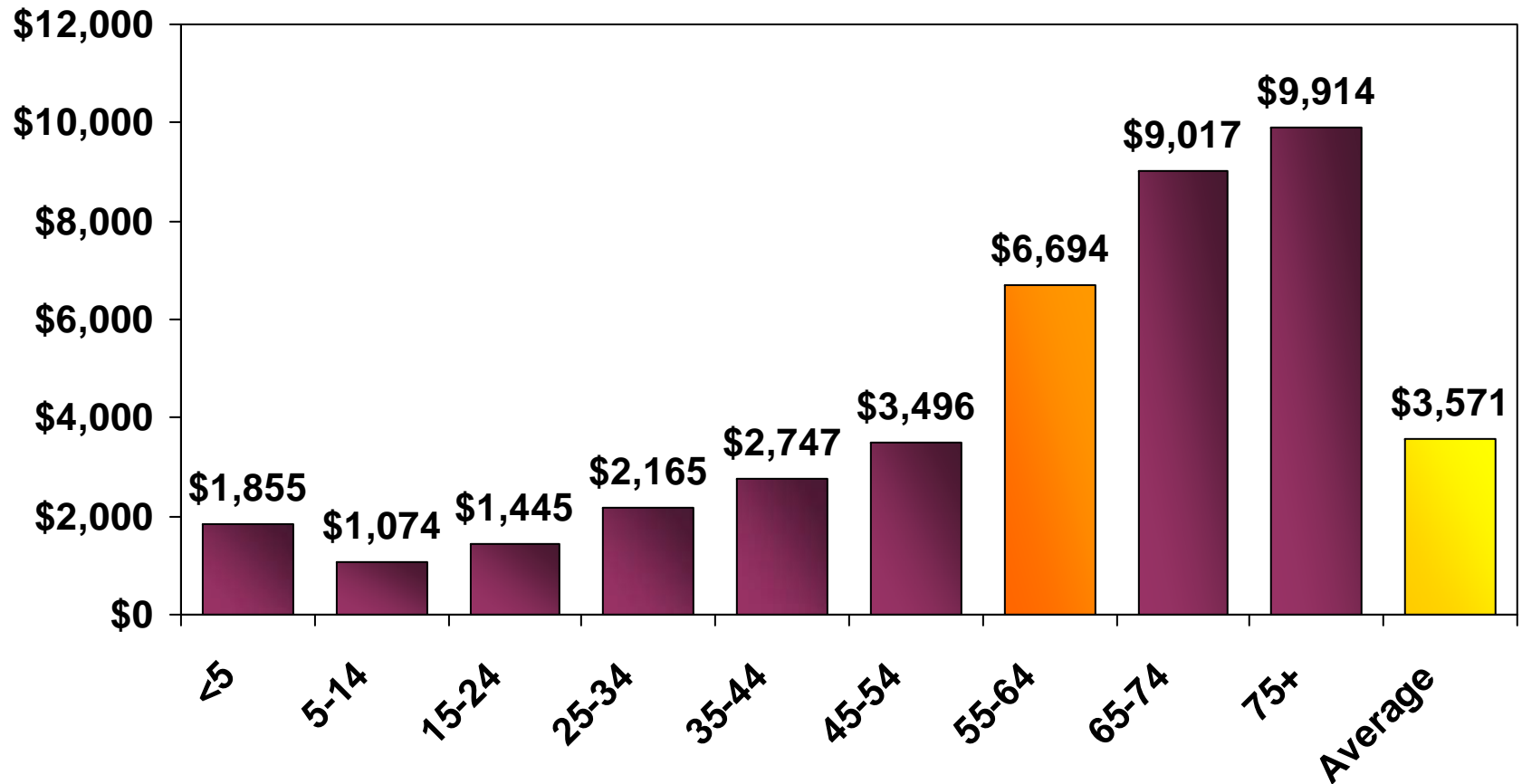
# If State Health Care Costs Continue Their Current Trend, State Spending On Other Services Can't Grow



General Fund Spending Outlook, presentation to the Budget Trends Commission, August 2008, Dybdal, Reitan and Broat

# Health Care Spending Jumps After 55

## U.S. Health Care Spending By Age, 2004



Source: Agency for HealthCare Research and Quality, Medical Expenditure Panel Survey, data for per capita spending by age group in the Midwest. Excludes spending for long-term care institutions.